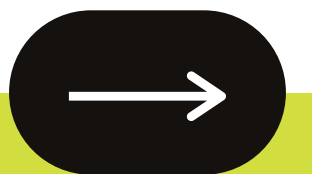


Supplies and how to mix

# Onboarding Plan

This document will provide you with how to use and fill supplies. please keep this handy!





# Disinfectants and Cleaning Solutions

When empty only fill 3% of bottle with solution and rest with water -

see line in image

Please use gloves when filling and be familiar with Wimis Label



Rest water

Fill to!



Rest water

Fill to!

# Window Cleaning Solutions



We use Motor Master Window Cleaner - 45 to clean our windows. Simply fill labeled spray bottle full and use

# Salt remover - Wet-mop Floor Cleaner Neutra Life 4L



Only use when floor is salty - you pour into mop bucket 2-4 seconds depending on slat level. Wetmop and then rinse and re-wet-mop with no solution

# Urinal Hard Cleaner



Strong Urinal Cleaner, only use if instructed, a quick spray goes a long way

# Urinal + Toilet Reg Cleaner



Used Weekly to clean inside toilets and or urinals

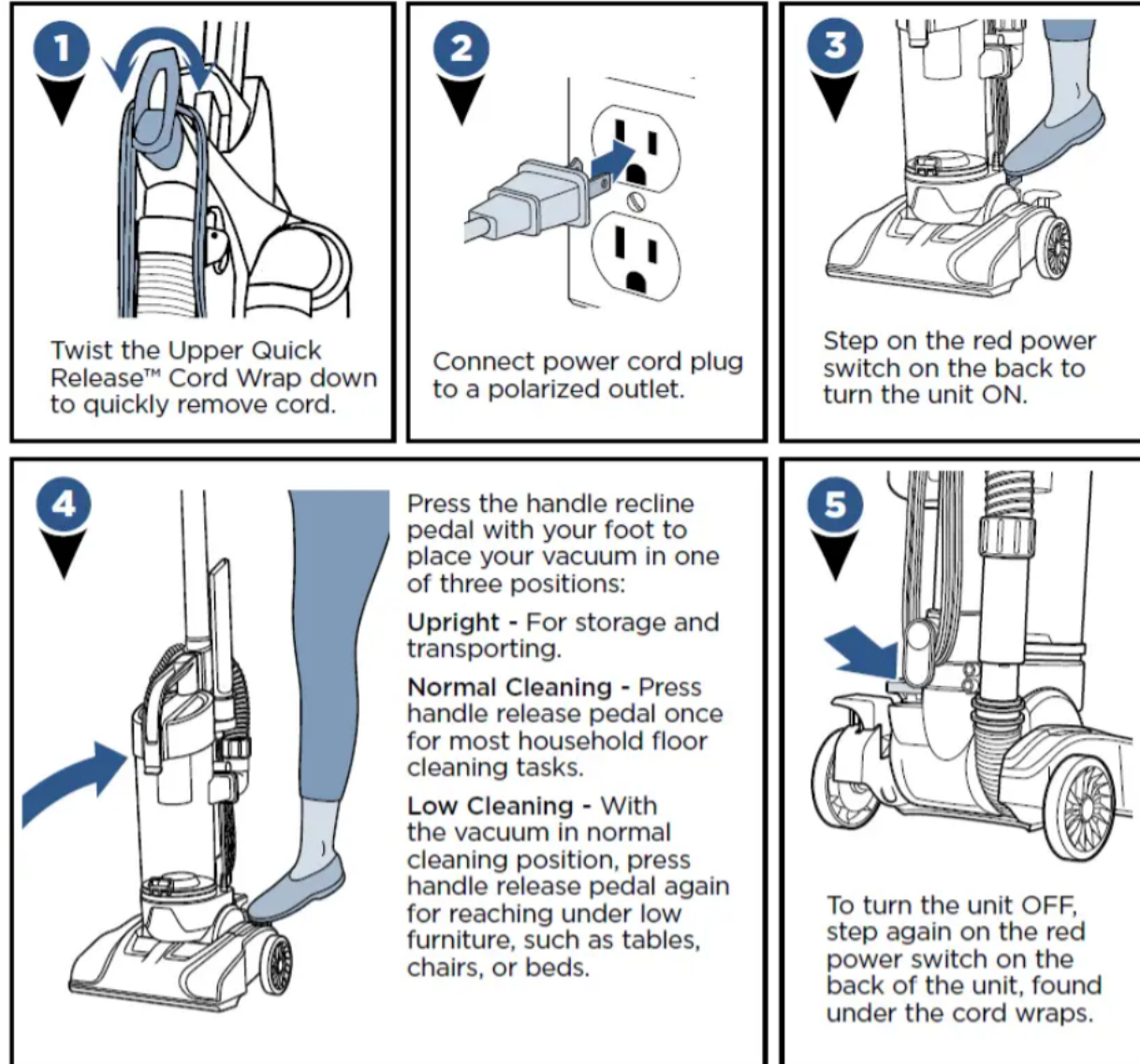
# Pull Cleaner ( only on specific contracts



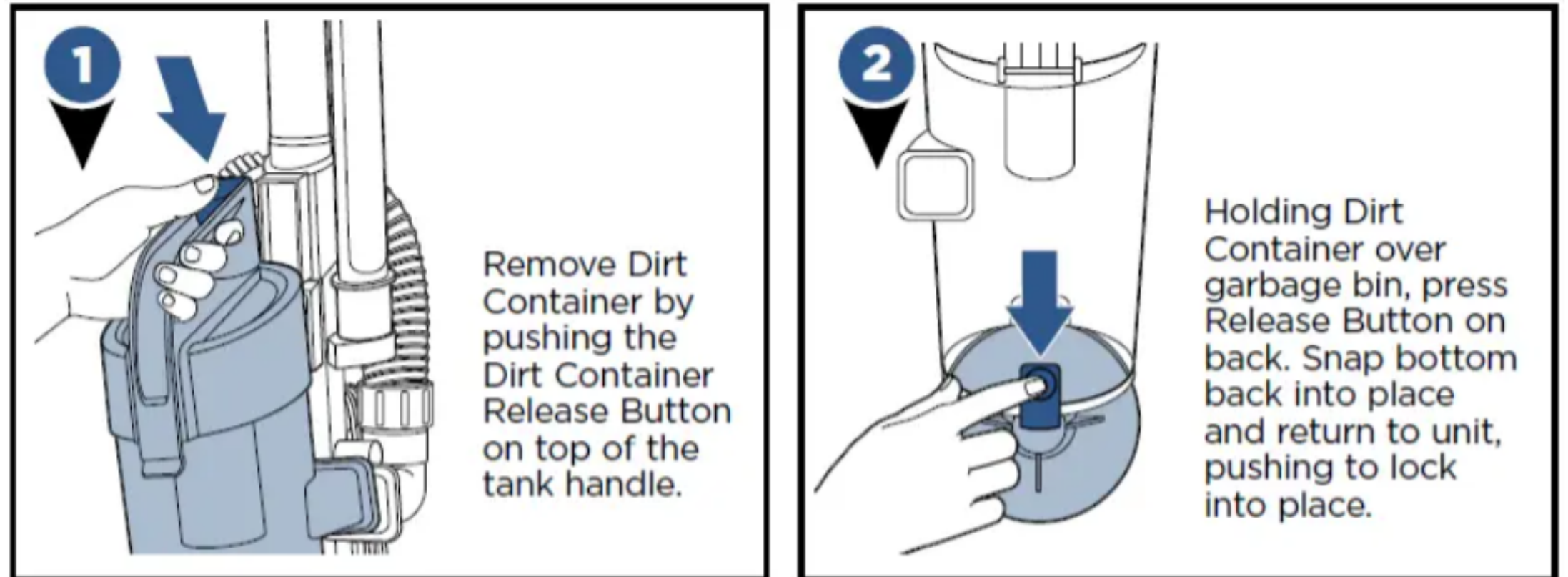
Pull is a very heavy duty cleaner , a small spray goes a long way to remove rust or dirt residue .. BUT will damage Chrome



# How to use the Vacuum



## Emptying the Dirt Container



**NOTE:** The dirt container may be washed in warm water with a mild detergent. Rinse and dry thoroughly before re-attaching it. This is not dishwasher safe.